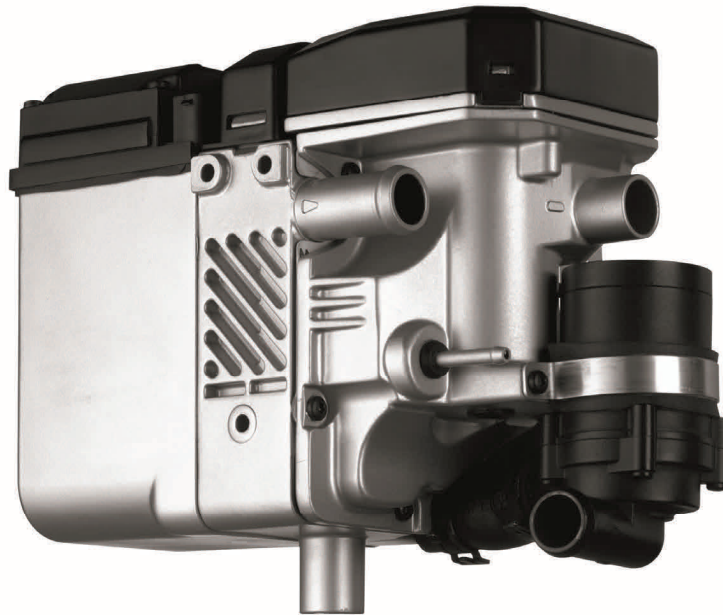


Water Heating

Thermo Top Series



With the Webasto water heating system in your mobile home, and the heated air option, you'll be thoroughly spoiled. The practical water heating system for kitchen and bathroom means you have a constant supply of hot water for showering, washing, cooking and washing up. Depending on how it is incorporated, this system can also be used to provide heated air throughout the living area, so you can enjoy the level of cozy warmth you want at little additional costs. All the comfort of home even in the middle of nowhere.

Advantages of Webasto Water Heaters:

- 12 volt or 24 volt system
- Diesel fuel burner (one fuel source)
- Meets European Safety Codes and Standards and Australian equivalents
- Completely enclosed, no naked flame
- Electronic thermostat for constant controlled water temperature
- High output and short heat up time
- Quiet and economical to run
- Environmentally friendly (low emission)
- Low current draw
- Compact, space saving design
- Safe to operate (no gas)
- Operates independently of vehicle engine and external power supply
- Easy expansion of system to allow air heating for the living space

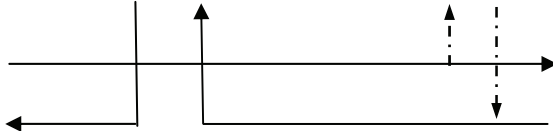
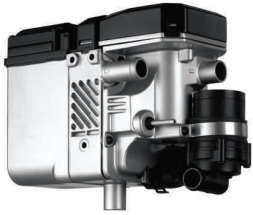
Model	Voltage	Fuel Type	Heat Output (kW) Partial Load - Full Load	Fuel Consumption (l/hr) Partial Load - Full Load	Power Consumption (W) Partial Load - Full Load	Dimensions L x W X H (mm)	Weight (kg)
Thermo Top E	12	Diesel	2.6 - 4.2	0.29 - 0.47	22 -26	214 x 106 x 168	2.8
Thermo Top C	12	Diesel	2.6 - 5.2	0.20 - 0.59	22 -32	214 x 106 x 168	2.9
Thermo 90 ST	12 / 24	Diesel	1.8 - 7.6 variable 9.1 booster speed	0.19 - 0.90	37 -83	352 x 131 x 232	4.8

System layout

Buffer Tank



Fan Heater
1.5 kW to 8.8 kW



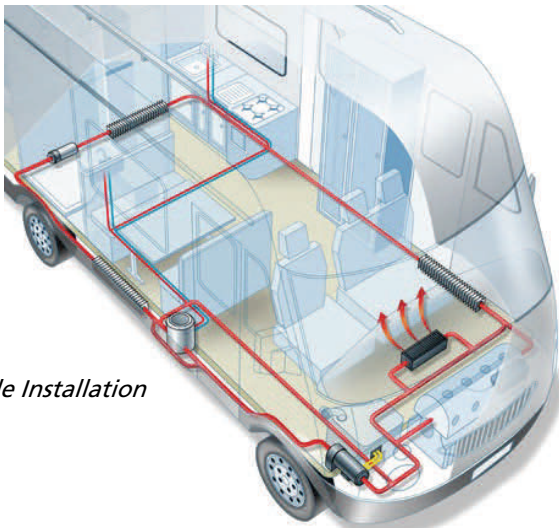
Hot Water Heating & Storage Tank
20, 30, 40 and 60 liters models

Thermo Top Heater
4.2 kw to 35.0 kW

Operation:

- Heating System plumbing is charged with Glycol
- Webasto Thermo Top is used to heat Glycol solution and to pump heated solution around plumbing system and into the hot water storage tank. A fan heater circulates the resulting hot air to designated areas
- Stainless steel coils heat storage tank water to 80 ° Celsius
- Thermostatic control ensures automatic heater restart to maintain temperatures
- Buffer tank provides increased capacity to allow heater to run at optimum performance

Isotemp Boilers	Volume (L)	Dimensions L x ØD mm	Weight (kg)
Slim 15	15	520 x 295	10.5
Slim 20	20	645 x 295	11.5
Slim 25	25	765 x 295	13.5
Basic 24	24	470 x 395	14.0
Basic 30	30	535 x 395	17.0
Basic 40	40	640 x 395	20.0
Basic 50	50	760 x 395	23.0
Basic 75	75	1050 x 395	29.0
Square 16	16	400 x 180 x 560	16.0



Sample Installation